

Holland  America

Alaska

2026 CRUISES & CRUISETOURS



Holland America Line
Best Cruise in Alaska

#1 CRUISE LINE FOR ALASKA
WILDLIFE & WILDERNESS TOURS

SEE MORE ALASKA GLACIERS WITH US
THAN WITH ANY OTHER CRUISE LINE

Contents



MAP LEGEND

- 7-Day Alaska Inside Passage Cruises
- 7-Day Glacier Discovery Cruises
- 7-Day Alaska Explorer Cruises
- 14-Day Great Alaska Explorer Cruises
- 28-Day Arctic Circle Solstice Cruise
- Land Routes
- ⋯ Flight Routes
- ▬▬▬ McKinley Explorer[®] Railway
- ▬▬▬ White Pass & Yukon Route Railway
- ▬▬▬ Cruisetrain



TOP REASONS TO CRUISE ALASKA WITH US	2
EXPERIENCE THE BEST OF ALASKA	3
SEE MORE ALASKA GLACIERS WITH US	4
HOLLAND AMERICA GLACIER GUARANTEE™	5
MORE ACCESS TO WILDLIFE	6
VISIT ALASKA'S NATIONAL PARKS	7
HOLLAND AMERICA ALASKA CRUISES	8
7-DAY ITINERARIES	9
14-DAY ITINERARIES	10
LEGENDARY 28-DAY ARCTIC CIRCLE SOLSTICE	11
HOLLAND AMERICA ALASKA CRUISETOURS	12
WHY BOOK AN ALASKA CRUISETOUR?	13
PREMIER DENALI EXPERIENCE	14
HOLLAND AMERICA DENALI LODGE	15
LUXURY RAIL EXPERIENCE	16
JOURNEY INTO DENALI NATIONAL PARK	17
HISTORIC DAWSON CITY, YUKON	18
FEATURED 13-DAY ALASKA, DENALI & YUKON CRUISETOUR	19
EXPERIENCE ALASKA YOUR WAY	20
2026 CRUISETOUR ITINERARY OPTIONS: ALASKA & DENALI	21
2026 CRUISETOUR ITINERARY OPTIONS: ALASKA, DENALI & YUKON	24
2026 ALASKA CRUISETOUR FEATURES	27
DENALI DINING UPGRADES	28
DENALI ROOM UPGRADES	29
WE ♥ ALASKA	30
DISCOVER ALASKA	31
TASTE ALASKA	32
EXPERIENCE ALASKA	33
ONBOARD EXPERIENCES	
DINING, BARS & LOUNGES	34
ACTIVITIES DAY & NIGHT	35
THE ULTIMATE SPA EXPERIENCE	36
HAVE IT ALL EARLY BOOKING BONUS	37
TERMS & CONDITIONS	38

Top Reasons

TO CRUISE ALASKA WITH HOLLAND AMERICA



ALASKA GLACIER GUARANTEE™

Cruise Alaska with Holland America and see a glacier — guaranteed — or receive a Future Cruise Credit equal to 15% of your cruise fare.



#1 IN ALASKA WILDLIFE & WILDERNESS TOURS

175+ animal sanctuary and sightseeing opportunities. Experience Alaska wildlife up close through our exclusive partnership with the Alaska Wildlife Conservation Center.



COMPLIMENTARY DENALI TOURS

Uncover the history, wildlife, and wilderness of Denali National Park & Preserve on one of two complimentary guided park tours.



WE ♥ ALASKA™ EXPERIENCE

Our 360° destination programming features Alaska Up Close presentations, fresh local cuisine, and curated shore excursions.



FRESH LOCAL SEAFOOD

The first and only cruise line certified for sustainable, wild-caught, and responsibly farmed Alaska seafood on board.



LUXURY RAIL EXPERIENCE

Every Alaska cruisetour includes a ride on board our privately owned, two-story, glass-domed McKinley Explorer® railcars.

Early Booking *Bonus*
Have it all.

Save up to 60% on top amenities with the Have It All Early Booking Bonus!

EXPERIENCE THE Best of Alaska



ALASKA CRUISES



Glacier Bay National Park & Preserve



ALASKA CRUISETOURS



Holland America Denali Lodge

NEW! 2026-2027 ENHANCEMENTS

- 7- to 28-day itineraries
- Convenient weekend departures from Seattle and Vancouver
- Privileged access to Glacier Bay National Park & Preserve
- Onboard National Park Service Rangers, Wildlife Experts, and more
- Glacier Guarantee™: See an Alaska glacier or receive a Future Cruise

Credit equal to 15% of your cruise fare

Click to **LEARN MORE** about **ALASKA CRUISES**



- 9- to 17-day itineraries
- A land-and-sea package that brings you into the heart of Alaska's wild interior
- All cruisetours include a complimentary tour of Denali National Park & Preserve
- Exclusive access to Canada's Klondike Yukon Territory on Denali & Yukon itineraries
- Expert local Tour Directors on *Ultimate Denali* and *Denali & Yukon* itineraries
- Private glass-domed railcars and cozy Denali wilderness lodge with enhanced amenities

Click to **LEARN MORE** about **ALASKA CRUISETOURS**



SEE MORE

Alaska Glaciers

WITH US THAN WITH ANY OTHER CRUISE LINE

We understand that seeing glaciers on an Alaska cruise is one of your top priorities. Experience these blue-hued giants in your preferred way:

BY SEA: Take in glacier views from the deck of the ship or hop aboard a catamaran, rigid inflatable boat (RIB), or kayak for an up-close encounter

BY AIR: Admire breathtaking aerial views from on board a seaplane or helicopter

BY LAND: Trek across the icy surface or dogsled behind a team of Alaska Huskies

Click to **LEARN MORE** about our **TOP EXCURSIONS**



Valdez Glacier



Hiking



Sailing



Flightseeing



Dogsledding

EXCLUSIVE

HOLLAND AMERICA Glacier Guarantee™

We've been sailing to Alaska longer than any other cruise line and know how important it is to see glaciers on your Alaska cruise. Now you can book with confidence with Holland America's Glacier Guarantee™. If your journey does not include a glacier visit, you'll receive a Future Cruise Credit equal to 15% of your cruise fare.



Click to **LEARN MORE** about our **GLACIER GUARANTEE**



Authorized
Concessioner

Glacier Bay National Park

MORE ACCESS TO Wildlife THAN ANY OTHER CRUISE LINE

#1 CRUISE LINE FOR ALASKA WILDLIFE & WILDERNESS TOURS

Holland America provides more access to Alaska wildlife than any other cruise line. Our 175+ animal sanctuary, sightseeing, and shore excursions bring you face-to-face with creatures great and small. Enjoy a complimentary tour through Denali National Park & Preserve and experience Alaska wildlife up close through our exclusive partnership with the Alaska Wildlife Conservation Center.

Click to **LEARN MORE** about our **TOP EXCURSIONS**



Gray wolf



Dall sheep



Sea otter



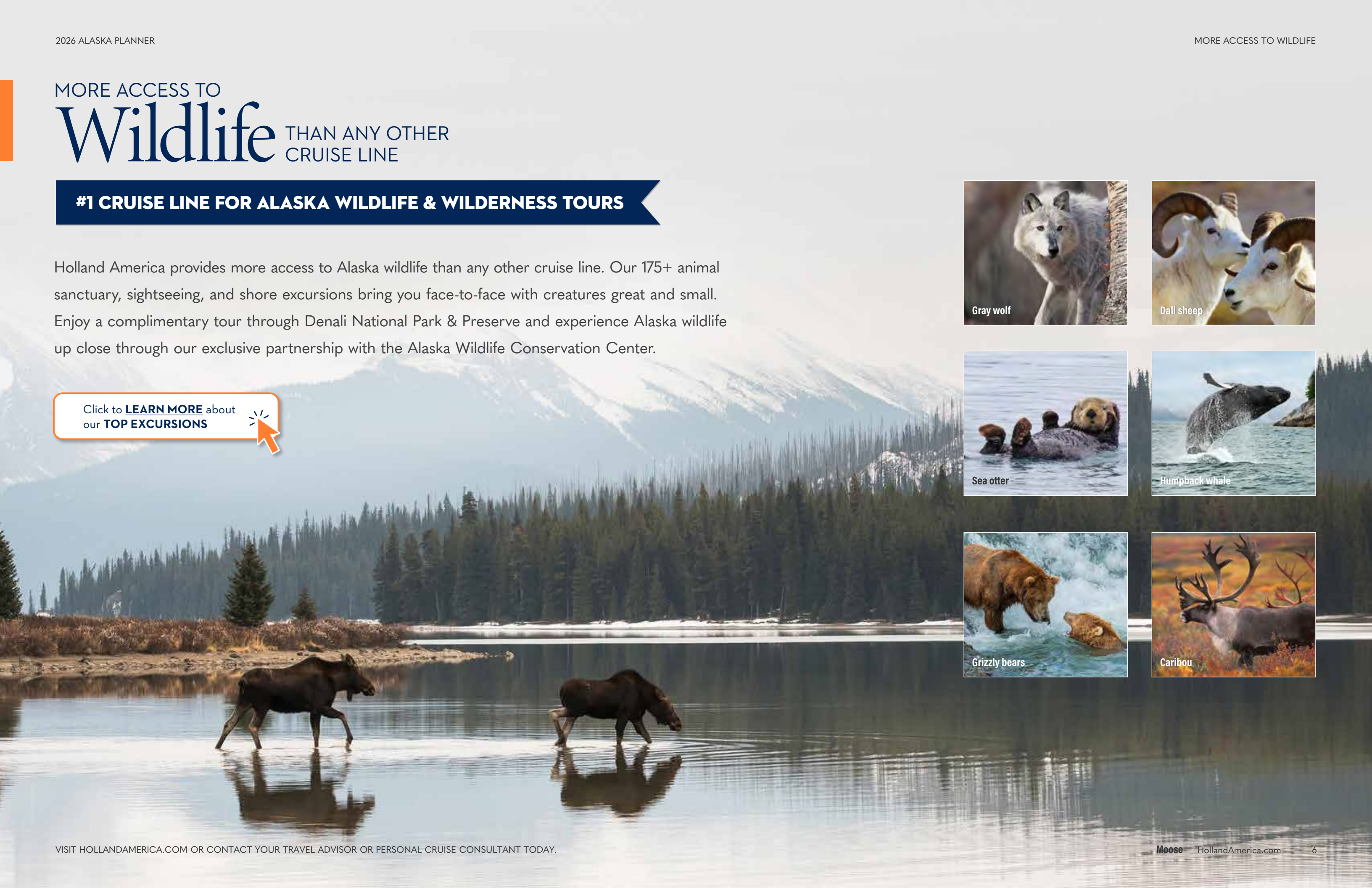
Humpback whale



Grizzly bears



Caribou



VISIT ALASKA'S

National Parks

🔗 **DENALI NATIONAL PARK & PRESERVE** Denali's sprawling 6 million acres are home to diverse wildlife, imposing landscapes, and North America's highest mountain peak. Experience the park's majesty for yourself on a Holland America Alaska cruisetour, every one of which includes a 1- to 3-night stay at the gates of Denali.

🔗 **GLACIER BAY NATIONAL PARK & PRESERVE** Part of the larger Kluane / Wrangell–St. Elias / Glacier Bay / Tatshenshini–Alsek UNESCO World Heritage Site and one of the world's largest internationally protected biosphere reserves, 3.3 million-acre Glacier Bay is an Alaska gem best experienced by sea.

🔗 **KENAI FJORDS NATIONAL PARK** Alaska's smallest national park at 1,047 square miles, Kenai Fjords National Park boasts cascading glaciers, lush waterfalls, and many of Alaska's most beloved wildlife species. See these wonders for yourself on our 14-Day *Ultimate Denali* (D3) cruisetour featuring two nights in Seward.

🔗 **WRANGELL-ST. ELIAS NATIONAL PARK** Nicknamed "The Mountain Kingdom of North America" for its staggering 13.2 million acres, this national park is the United States' largest — six times the size of Yellowstone! Part of the aforementioned UNESCO World Heritage Site, it's also home to grandiose Hubbard Glacier.

LEARN MORE about the
NATIONAL PARKS WE VISIT





HOLLAND AMERICA

Alaska Cruises

**WE'VE BEEN VISITING ALASKA SINCE 1947
BEFORE IT WAS EVEN A STATE!**



7-Day Itineraries



7-DAY ALASKA EXPLORER

This roundtrip sailing from Seattle features convenient weekend departures as well as stops in Juneau, Sitka, and Ketchikan. Visits to either Glacier Bay or Dawes Glacier complete this tried-and-true Alaska exploration.



7-DAY ALASKA EXPLORER

Roundtrip Seattle

Eurodam

**2026 Apr 25; May 2, 9, 16*, 23, 30;
Jun 6, 13, 20, 27; Jul 4, 11, 18, 25;
Aug 1, 8, 15, 22, 29; Sep 5*, 12, 19, 26**

*These itineraries vary, visit HollandAmerica.com for details.



7-DAY ALASKA EXPLORER

Roundtrip Seattle

Noordam

**2026 Apr 26; May 3, 10, 17, 24, 31;
Jul 5, 12, 19, 26; Aug 2, 9, 16**

7-DAY GLACIER DISCOVERY

Both the north- and south-bound versions of this cruise include stops in Skagway, Juneau, and Ketchikan plus two full "Glacier Days" in Glacier Bay National Park & Preserve and either Hubbard Glacier or College Fjord.



7-DAY GLACIER DISCOVERY NORTHBOUND

Vancouver to Whittier (Anchorage)

Westerdam

**2026 May 10, 24; Jun 7, 21; Jul 5, 19;
Aug 2, 16, 30**

Nieuw Amsterdam

**2026 May 17, 31; Jun 14, 28; Jul 12, 26;
Aug 9, 23; Sep 6**



7-DAY GLACIER DISCOVERY SOUTHBOUND

Whittier (Anchorage) to Vancouver

Westerdam

**2026 May 17, 31; Jun 14, 28; Jul 12, 26;
Aug 9, 23; Sep 6**

Nieuw Amsterdam

**2026 May 24; Jun 7, 21; Jul 5, 19;
Aug 2, 16, 30; Sep 13**

7-DAY ALASKA INSIDE PASSAGE

This popular cruise sails roundtrip from Vancouver, with port calls in Juneau, Skagway, and Ketchikan. The ship then sails back through Alaska's Inside Passage, Glacier Bay National Park & Preserve, and the Tracy Arm Fjord.



7-DAY ALASKA INSIDE PASSAGE

Roundtrip Vancouver

Koningsdam

**2026 May 2, 9, 16, 23, 30; Jun 6, 13, 20, 27;
Jul 4, 11, 18, 25; Aug 1, 8, 15, 22, 29;
Sep 5, 12, 19, 26**

Zaandam

**2026 May 6, 13, 20, 27; Jun 3, 10, 17, 24;
Jul 1, 8, 15, 22, 29; Aug 5, 12, 19, 26;
Sep 2, 9, 16**

Nieuw Amsterdam
2026 Sep 20



14-Day Itineraries

Uncover Alaska’s popular ports and hidden gems on a two-week journey of discovery. Explore the 49th state’s largest cities and uncover its less-traveled wonders, stepping into the rough-and-ready world of Alaska’s commercial fisheries in Kodiak and marveling at glaciers, canyons, and waterfalls in Valdez.



14 DAYS

14-DAY GREAT ALASKA EXPLORER

Roundtrip Vancouver

Nieuw Amsterdam
2026 May 3



14 DAYS

14-DAY GREAT ALASKA EXPLORER

Roundtrip Seattle

Noordam
2026 Aug 23



14 DAYS

14-DAY GREAT ALASKA EXPLORER

Roundtrip Vancouver

Westerdam
2026 Sep 13



18 DAYS

18-DAY GREAT BEAR RAINFOREST AND ALASKA EXPLORER

Roundtrip Vancouver

Zaandam
2026 Sep 16





28-DAY ARCTIC CIRCLE SOLSTICE

ROUNDRIP SEATTLE *Noordam* **2026 Jun 7**

- Venture north of the Arctic Circle during the Summer Solstice to experience Alaska beneath the glow of the midnight sun
- Traverse the Bering Sea while enjoying scenic cruising along the Inside Passage, Hubbard Glacier, Glacier Bay, and more
- Call on such classic ports as Ketchikan and Juneau as well as unique stops including Nome and the fabled Kodiak Islands





HOLLAND AMERICA **ALASKA**
Cruisetours

COMBINE THE BEST OF AN ALASKA CRUISE WITH
AN UNFORGETTABLE JOURNEY INTO THE HEART OF ALASKA'S INTERIOR



WHY BOOK AN ALASKA

Cruisetour?

- **LUXURY RAIL EXPERIENCE** Travel through Alaska’s interior on board Holland America’s private McKinley Explorer® railcars
- **COMPLIMENTARY DENALI TOURS** All Alaska cruisetours include a guided visit to Denali National Park & Preserve
- **THE YUKON EXPERIENCE** The only cruise line taking you into the heart of Canada’s Yukon Territory with expert-led guides
- **UNESCO SITES** All Alaska cruisetours include a visit to at least one of Alaska & the Yukon’s UNESCO World Heritage sites
- **ALASKA WILDLIFE ON LAND** Spot Alaska’s “Big 5” animals with the cruise line that’s #1 in Alaska Wildlife & Wilderness Tours



Caribou, Denali National Park & Preserve



Find the perfect Alaska cruisetour for you with our interactive quiz! Combine your cruise with a scenic train ride and up to 3 nights at Denali National Park & Preserve plus a guided journey into the wild Yukon Territory.





FIRST IN ALASKA

Best in Denali

Board our privately owned glass-domed McKinley Explorer® railcars and embark on an unforgettable luxury rail experience through Alaska’s sprawling interior. Your destination? Our exclusive 60-acre Holland America Denali Lodge — your base camp for adventures in Denali National Park & Preserve and your home for the next 1–3 nights.



Holland America Denali Lodge



Denali Square™



Karstens



Holland America Denali Lodge



Sled dog puppy

- **DENALI SQUARE™** Savor local specialties, shop for handcrafted goods, hear live entertainment, or visit an Alaska Artist-in-Residence
- **KARSTENS PUBLIC HOUSE** We’re expanding this eatery’s indoor and outdoor seating for even more Great Land fun
- **CANYON STEAKHOUSE** Experience fine dining Alaska-style at Denali’s only steakhouse, featuring steaks, seafood, and more
- **MUSIC OF DENALI** Enjoy a family-style Alaska feast and more at the Gold Nugget Saloon’s Music of Denali dinner theater



ENHANCING THE Guest Experience IN DENALI

In 2025–2027, we’re transforming our Holland America–owned and -operated lodge with enhancements across the wilderness property, bringing you improved public spaces, remodeled guest rooms and suites, the best of local flavors, plus local artists and experts to enhance your Alaska experience.



Hiking trail



Denali Suite



Alaska salmon



Denali Lodge performers

WILDERNESS PROPERTY

Experience the majesty of Alaska’s unspoiled wilderness in comfort with our improved public spaces, enhanced riverside hiking trails, and outdoor firepits crackling beneath the starry Alaska sky.

STATEROOMS & SUITES

We’re elevating the Holland America Denali Lodge experience even further with remodeled guest rooms and suites featuring complimentary s'mores kits, in-suite coffee machines, and cozy Pendleton® blankets perfect for cool Alaska nights.

BEST OF LOCAL FLAVORS

We’re bringing our signature Destination Dining™ to Denali with local craft beer, reindeer sausage, and other regional specialties that tell the unique story of Alaska in each delicious bite.

LODGE EXPERIENCES

Celebrating our commitment to service with attention to destination details by integrating local artists and experts for an enhanced guest experience.



Luxury Rail

EXPERIENCE

Embrace the timeless elegance of leisure travel and enjoy unmatched comfort with top-notch service aboard Holland America's private, two-level, glass-domed McKinley Explorer® railcars.

- **LUXURY TRAIN JOURNEY** Every cruisetour features a ride on board our McKinley Explorer® railcars
- **PANORAMIC VIEWS** Take in awe-inspiring vistas of Hurricane Gulch, Broad Pass and more
- **ELEGANT DINING** Savor regional cuisine in the charming, elegantly appointed dining car
- **OPEN-AIR PLATFORM** Breathe in crisp mountain air and enjoy unobstructed landscape views
- **SCENIC COMMENTARY** Listen to engaging stories and insights from our expert guides as the landscape unfolds before you





JOURNEY INTO

Denali National Park

OUR ALASKA CRUISETOURS BRING YOU TO THE GATES OF DENALI NATIONAL PARK & PRESERVE AND BEYOND

- Venture deep into the park's unspoiled wilderness on the ***Tundra Wilderness Tour***, included on all 2- and 3-night stays at Holland America Denali Lodge
- Discover the beauty and stories of the park on the ***Denali Natural History Tour***, included on all 1-night stays at Holland America Denali Lodge



HISTORIC Dawson City, Yukon

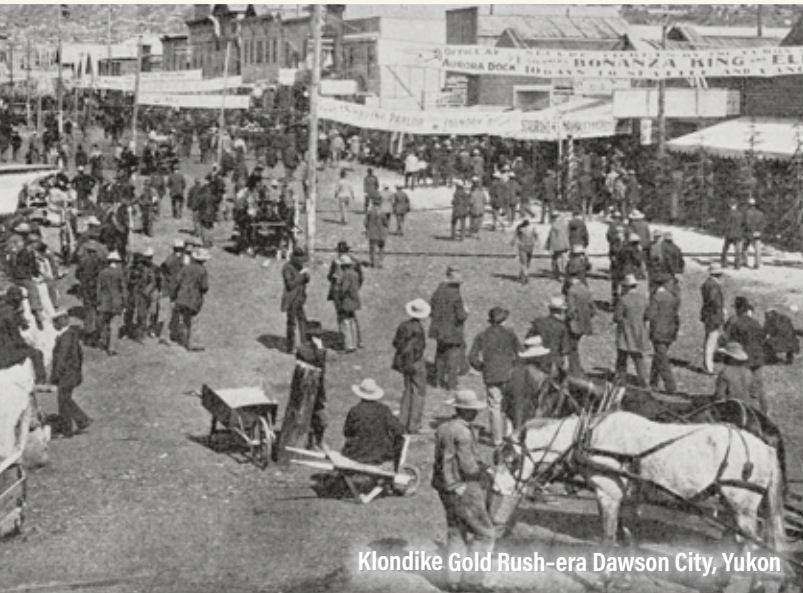
Venture where few have gone before with the only cruise line offering overnight stays in the heart of the sub-arctic Tr'ondëk-Klondike region – a UNESCO World Heritage site that tells the story of the Tr'ondëk Hwëch'in people and the effects of Gold Rush expansion and colonialism. Explore Dawson City, known for its sweeping landscapes, Native traditions, and Klondike Gold Rush history, and follow in the footsteps of 1896 prospectors at the meeting of the Klondike and Yukon Rivers.

Highlights include:

- Complimentary **Klondike Gold Tour** on all Yukon itineraries
- An immersive journey into Klondike Gold Rush history
- The historic White Pass & Yukon Route Railway
- Expert insights from local Tour Directors
- Two night stays in Dawson City



Klondike Gold Rush-era Dawson City, Yukon



Klondike Gold Rush-era Dawson City, Yukon



Dawson City Museum, Yukon



Dänojà Zho Cultural Centre, Dawson City, Yukon



Diamond Tooth Gerties, Dawson City, Yukon

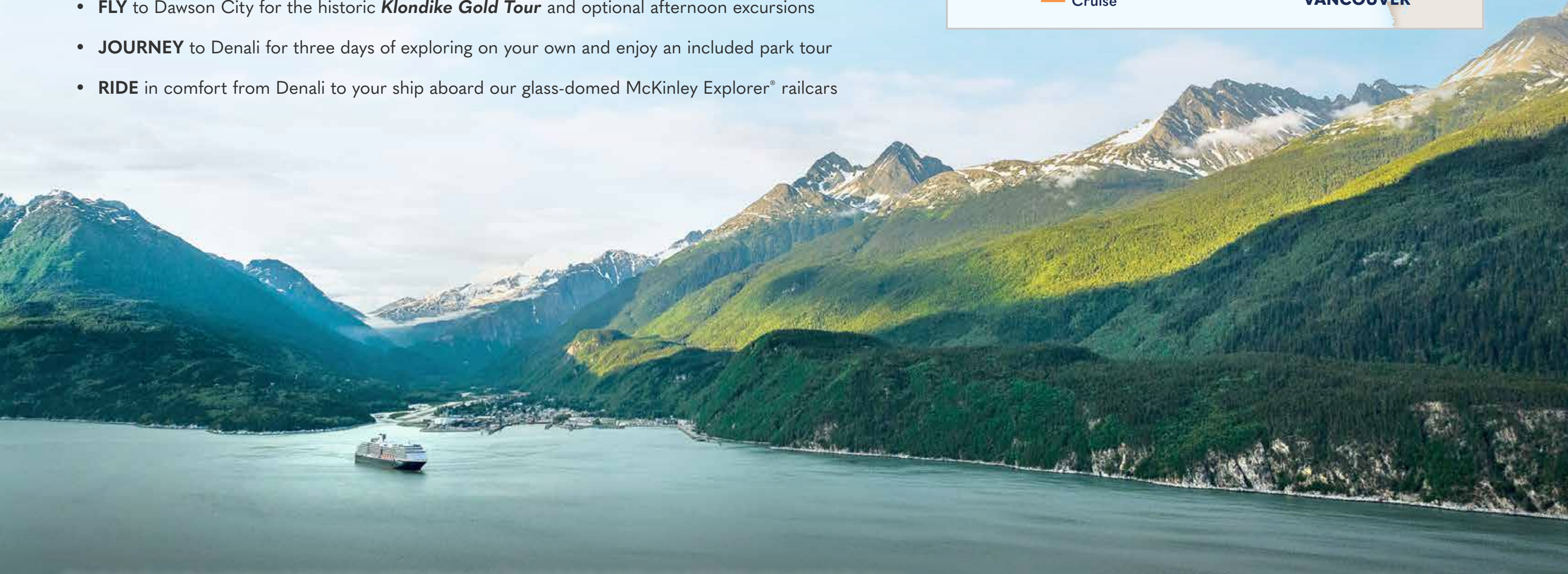
NEW

13-DAY ALASKA, DENALI & YUKON CRUISETOUR

Nieuw Amsterdam **2026** May 18; Jun 1, 15, 29; Jul 13, 27; Aug 10, 24; Sep 7 *Westerdam* **2026** May 25; Jun 8, 22; Jul 6, 20; Aug 3, 17, 31

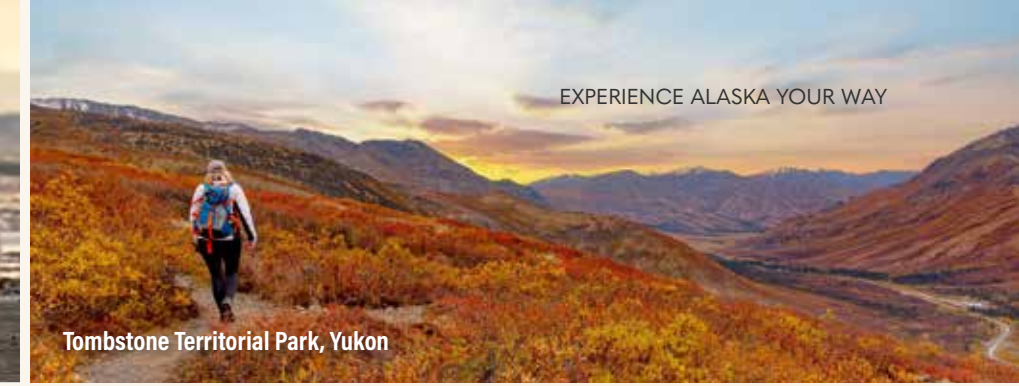
FAIRBANKS TO VANCOUVER

- **VENTURE** to Fairbanks for a downtown hotel stay and the exciting Riverboat *Discovery* tour
- **FLY** to Dawson City for the historic ***Klondike Gold Tour*** and optional afternoon excursions
- **JOURNEY** to Denali for three days of exploring on your own and enjoy an included park tour
- **RIDE** in comfort from Denali to your ship aboard our glass-domed McKinley Explorer® railcars





EXPERIENCE
Alaska Your Way



	CLASSIC ALASKA & DENALI	SIGNATURE ALASKA & DENALI	ULTIMATE ALASKA & DENALI	ALASKA, DENALI & YUKON
WHAT IS IT?	Alaska & Denali highlights	Best of Alaska & Denali	Best of Alaska & Denali + a quaint Alaska town	Best of Alaska & Denali + the Yukon Territory
WHICH CRUISE IS INCLUDED?	7-Day <i>Glacier Discovery</i>	7-Day <i>Glacier Discovery</i>	7-Day <i>Glacier Discovery</i>	7-Day <i>Glacier Discovery</i> OR 7-Day <i>Alaska Inside Passage</i> (3–4 nights)
HOW MANY DAYS ON LAND?	2–3	3–5	7	6–10
HOW MANY NIGHTS AT DENALI NATIONAL PARK?	1	2–3	2	2–3
WHICH “GLACIER DAYS” ARE INCLUDED?	<ul style="list-style-type: none"> • Glacier Bay National Park & Preserve • College Fjord OR Hubbard Glacier 	<ul style="list-style-type: none"> • Glacier Bay National Park & Preserve • College Fjord OR Hubbard Glacier 	<ul style="list-style-type: none"> • Glacier Bay National Park & Preserve • College Fjord OR Hubbard Glacier 	<ul style="list-style-type: none"> • Glacier Bay National Park & Preserve* • College Fjord OR Hubbard Glacier†
WHICH DENALI NATIONAL PARK TOUR IS INCLUDED?	<i>Denali Natural History Tour</i>	<i>Tundra Wilderness Tour</i>**	<i>Tundra Wilderness Tour</i>**	<i>Tundra Wilderness Tour</i>**
IS THE MCKINLEY EXPLORER® RAILWAY INCLUDED?	Yes	Yes	Yes	Yes
IS A TOUR DIRECTOR INCLUDED?	No	No	Yes	Yes
WHY SHOULD I CHOOSE THIS CRUISETOUR?	Denali + the Alaska Railroad in the shortest amount of time	Signature Denali experiences + up to 3-night stays	Iconic Alaska favorites + Alyeska, Seward, or Homer + a visit to AWCC††	Unique guided tour of Denali + a visit to Dawson City with a complimentary <i>Klondike Gold Tour</i>



2026 CRUISETOUR ITINERARY OPTIONS Alaska & Denali



... Air Travel
— Land Transportation
— Rail Transportation
— D1-D9, D0 & DH Ship Itineraries

INCLUDED TRANSPORTATION
 Cruisetour flights require passport information and middle names, if applicable, to be submitted at the time of booking.

On Land	At Sea				
---------	--------	--	--	--	--

SIGNATURE ALASKA & DENALI CRUISETOURS (2 OR 3 NIGHTS AT DENALI)

	DAY 0	1	2	3	4	5	6	7	8	9	10	11	12
D1													
land first	Fairbanks	Triple Denali		Anchorage	Whittier	Hubbard Glacier	Glacier Bay	Skagway	Juneau	Ketchikan	Inside Passage	Disembark Vancouver	
cruise first	Vancouver	Inside Passage	Ketchikan	Juneau	Skagway	Glacier Bay	College Fjord	Anchorage	Triple Denali		Fairbanks	Cruisetour Ends	
D2													
land first	Anchorage	Triple Denali		Whittier	Hubbard Glacier	Glacier Bay	Skagway	Juneau	Ketchikan	Inside Passage	Disembark Vancouver		DIRECT TO DENALI
cruise first	Vancouver	Inside Passage	Ketchikan	Juneau	Skagway	Glacier Bay	College Fjord	Triple Denali		Anchorage	Cruisetour Ends		
D0													
land first	Fairbanks	Double Denali		Whittier	Hubbard Glacier	Glacier Bay	Skagway	Juneau	Ketchikan	Inside Passage	Disembark Vancouver		DIRECT TO DENALI
cruise first	Vancouver	Inside Passage	Ketchikan	Juneau	Skagway	Glacier Bay	College Fjord	Double Denali		Fairbanks	Cruisetour Ends		
D5													
land first	Fairbanks	Double Denali		Anchorage	Whittier	Hubbard Glacier	Glacier Bay	Skagway	Juneau	Ketchikan	Inside Passage	Disembark Vancouver	
cruise first	Vancouver	Inside Passage	Ketchikan	Juneau	Skagway	Glacier Bay	College Fjord	Anchorage	Double Denali		Fairbanks	Cruisetour Ends	
D6													
land first	Anchorage	Double Denali		Whittier	Hubbard Glacier	Glacier Bay	Skagway	Juneau	Ketchikan	Inside Passage	Disembark Vancouver		DIRECT TO DENALI
cruise first	Vancouver	Inside Passage	Ketchikan	Juneau	Skagway	Glacier Bay	College Fjord	Double Denali		Anchorage	Cruisetour Ends		

ULTIMATE ALASKA & DENALI CRUISETOURS (2 NIGHTS AT DENALI)

	DAY 0	1	2	3	4	5	6	7	8	9	10	11	12	13	14
D3															
land first	Fairbanks	Double Denali		Anchorage	Seward	Whittier	Hubbard Glacier	Glacier Bay	Skagway	Juneau	Ketchikan	Inside Passage	Disembark Vancouver		
cruise first	Vancouver	Inside Passage	Ketchikan	Juneau	Skagway	Glacier Bay	College Fjord	Seward	Anchorage	Double Denali		Fairbanks	Cruisetour Ends		
D4															
land first	Fairbanks	Double Denali		Anchorage	Alyeska	Whittier	Hubbard Glacier	Glacier Bay	Skagway	Juneau	Ketchikan	Inside Passage	Disembark Vancouver		
cruise first	Vancouver	Inside Passage	Ketchikan	Juneau	Skagway	Glacier Bay	College Fjord	Alyeska	Anchorage	Double Denali		Fairbanks	Cruisetour Ends		
DH															
land first	Fairbanks	Double Denali		Anchorage	Homer	Whittier	Hubbard Glacier	Glacier Bay	Skagway	Juneau	Ketchikan	Inside Passage	Disembark Vancouver		
cruise first	Vancouver	Inside Passage	Ketchikan	Juneau	Skagway	Glacier Bay	College Fjord	Homer	Anchorage	Double Denali		Fairbanks	Cruisetour Ends		

CLASSIC ALASKA & DENALI CRUISETOURS (1 NIGHT AT DENALI)

	DAY 0	1	2	3	4	5	6	7	8	9	10	
D7												
land first	Fairbanks	Denali	Anchorage	Whittier	Hubbard Glacier	Glacier Bay	Skagway	Juneau	Ketchikan	Inside Passage	Disembark Vancouver	
cruise first	Vancouver	Inside Passage	Ketchikan	Juneau	Skagway	Glacier Bay	College Fjord	Anchorage	Denali	Fairbanks	Cruisetour Ends	
D8												
land first	Fairbanks	Denali	Whittier	Hubbard Glacier	Glacier Bay	Skagway	Juneau	Ketchikan	Inside Passage	Disembark Vancouver	DIRECT TO DENALI	
cruise first	Vancouver	Inside Passage	Ketchikan	Juneau	Skagway	Glacier Bay	College Fjord	Denali	Fairbanks	Cruisetour Ends		
D9												
land first	Anchorage	Talkeetna	Denali	Whittier	Hubbard Glacier	Glacier Bay	Skagway	Juneau	Ketchikan	Inside Passage	Disembark Vancouver	DIRECT TO DENALI
cruise first	Vancouver	Inside Passage	Ketchikan	Juneau	Skagway	Glacier Bay	College Fjord	Denali	Talkeetna	Anchorage	Cruisetour Ends	



2026 CRUISETOUR ITINERARY OPTIONS Alaska & Denali



GRIZZLY BEAR (WILDLIFE PHOTO CONTEST WINNER **JAXON CARBAJAL**)

DO 10-DAY SIGNATURE DENALI DIRECT TO DENALI

FAIRBANKS TO VANCOUVER
(or reverse)

7-Day *Glacier Discovery* cruise plus:
2 nights: Denali
1 night: Fairbanks

INCLUDED IN YOUR CRUISETOUR

- McKinley Explorer**
- *Tundra Wilderness Tour (S)*[†]
- *Riverboat Discovery (L)*

LAND FIRST	CRUISE FIRST
Westerdam 2026 May 14, 28; Jun 11, 25; Jul 9, 23; Aug 6, 20; Sep 3	Westerdam 2026 May 10, 24; Jun 7, 21; Jul 5, 19; Aug 2, 16, 30
Nieuw Amsterdam 2026 May 21; Jun 4, 18; Jul 2, 16, 30; Aug 13, 27; Sep 10	Nieuw Amsterdam 2026 May 17, 31; Jun 14, 28; Jul 12, 26; Aug 9, 23; Sep 6

D3 14-DAY ULTIMATE DENALI

FAIRBANKS TO VANCOUVER
(or reverse)

7-Day *Glacier Discovery* cruise plus:
2 nights each: Denali, Fairbanks + Seward
1 night: Anchorage

INCLUDED IN YOUR CRUISETOUR

- **Tour Director**
- *Gold Dredge 8*
- *Riverboat Discovery (L)*
- McKinley Explorer**
- *Tundra Wilderness Tour (S)*[†]
- *Alaska Wildlife Conservation Center*

LAND FIRST	CRUISE FIRST
Westerdam 2026 May 10, 24; Jun 7, 21; Jul 5, 19; Aug 2, 16, 30	Westerdam 2026 May 10, 24; Jun 7, 21; Jul 5, 19; Aug 2, 16, 30
Nieuw Amsterdam 2026 May 17, 31; Jun 14, 28; Jul 12, 26; Aug 9, 23; Sep 6	Nieuw Amsterdam 2026 May 17, 31; Jun 14, 28; Jul 12, 26; Aug 9, 23; Sep 6

D1 12-DAY SIGNATURE DENALI

FAIRBANKS TO VANCOUVER
(or reverse)

7-Day *Glacier Discovery* cruise plus:
3 nights: Denali
1 night each: Anchorage + Fairbanks

INCLUDED IN YOUR CRUISETOUR

- McKinley Explorer**
- *Tundra Wilderness Tour (S)*[†]
- Cruisetrain
- *Riverboat Discovery (L)*

LAND FIRST	CRUISE FIRST
Westerdam 2026 May 12, 26; Jun 9, 23; Jul 7, 21; Aug 4, 18; Sep 1	Westerdam 2026 May 10, 24; Jun 7, 21; Jul 5, 19; Aug 2, 16, 30
Nieuw Amsterdam 2026 May 19; Jun 2, 16, 30; Jul 14, 28; Aug 11, 25; Sep 8	Nieuw Amsterdam 2026 May 17, 31; Jun 14, 28; Jul 12, 26; Aug 9, 23; Sep 6

D4 14-DAY ULTIMATE DENALI

FAIRBANKS TO VANCOUVER
(or reverse)

7-Day *Glacier Discovery* cruise plus:
2 nights each: Denali, Fairbanks + Alyeska
1 night: Anchorage

INCLUDED IN YOUR CRUISETOUR

- **Tour Director**
- *Gold Dredge 8*
- *Riverboat Discovery (L)*
- McKinley Explorer**
- *Tundra Wilderness Tour (S)*[†]
- *Alaska Wildlife Conservation Center*

LAND FIRST	CRUISE FIRST
Westerdam 2026 May 10, 24; Jun 7, 21; Jul 5, 19; Aug 2, 16, 30	Westerdam 2026 May 10, 24; Jun 7, 21; Jul 5, 19; Aug 2, 16, 30
Nieuw Amsterdam 2026 May 17, 31; Jun 14, 28; Jul 12, 26; Aug 9, 23; Sep 6	Nieuw Amsterdam 2026 May 17, 31; Jun 14, 28; Jul 12, 26; Aug 9, 23; Sep 6

D2 11-DAY SIGNATURE DENALI DIRECT TO DENALI

ANCHORAGE TO VANCOUVER
(or reverse)

7-Day *Glacier Discovery* cruise plus:
3 nights: Denali
1 night: Anchorage

INCLUDED IN YOUR CRUISETOUR

- McKinley Explorer**
- *Tundra Wilderness Tour (S)*[†]

LAND FIRST	CRUISE FIRST
Westerdam 2026 May 13, 27; Jun 10, 24; Jul 8, 22; Aug 5, 19; Sep 2	Westerdam 2026 May 10, 24; Jun 7, 21; Jul 5, 19; Aug 2, 16, 30
Nieuw Amsterdam 2026 May 20; Jun 3, 17; Jul 1, 15, 29; Aug 12, 26; Sep 9	Nieuw Amsterdam 2026 May 17, 31; Jun 14, 28; Jul 12, 26; Aug 9, 23; Sep 6

D5 11-DAY SIGNATURE DENALI

FAIRBANKS TO VANCOUVER
(or reverse)

7-Day *Glacier Discovery* cruise plus:
2 nights: Denali
1 night each: Anchorage + Fairbanks

INCLUDED IN YOUR CRUISETOUR

- McKinley Explorer**
- *Tundra Wilderness Tour (S)*[†]
- Cruisetrain
- *Riverboat Discovery (L)*

LAND FIRST	CRUISE FIRST
Westerdam 2026 May 13, 27; Jun 10, 24; Jul 8, 22; Aug 5, 19; Sep 2	Westerdam 2026 May 10, 24; Jun 7, 21; Jul 5, 19; Aug 2, 16, 30
Nieuw Amsterdam 2026 May 20; Jun 3, 17; Jul 1, 15, 29; Aug 12, 26; Sep 9	Nieuw Amsterdam 2026 May 17, 31; Jun 14, 28; Jul 12, 26; Aug 9, 23; Sep 6



2026 CRUISETOUR ITINERARY OPTIONS Alaska & Denali



Denali National Park & Preserve

D6 10-DAY SIGNATURE DENALI DIRECT TO DENALI

ANCHORAGE TO VANCOUVER
(or reverse)

7-Day *Glacier Discovery* cruise plus:
2 nights: Denali
1 night: Anchorage

INCLUDED IN YOUR CRUISETOUR
• McKinley Explorer** • *Tundra Wilderness Tour (S)*†

LAND FIRST	CRUISE FIRST
Westerdam 2026 May 14, 28; Jun 11, 25; Jul 9, 23; Aug 6, 20; Sep 3	Westerdam 2026 May 10, 24; Jun 7, 21; Jul 5, 19; Aug 2, 16, 30
Nieuw Amsterdam 2026 May 21; Jun 4, 18; Jul 2, 16, 30; Aug 13, 27; Sep 10	Nieuw Amsterdam 2026 May 17, 31; Jun 14, 28; Jul 12, 26; Aug 9, 23; Sep 6

D7 10-DAY CLASSIC DENALI

FAIRBANKS TO VANCOUVER
(or reverse)

7-Day *Glacier Discovery* cruise plus:
1 night each: Denali, Anchorage + Fairbanks

INCLUDED IN YOUR CRUISETOUR
• McKinley Explorer** • *Denali Natural History*

LAND FIRST	CRUISE FIRST
Westerdam 2026 May 14, 28; Jun 11, 25; Jul 9, 23; Aug 6, 20; Sep 3	Westerdam 2026 May 10, 24; Jun 7, 21; Jul 5, 19; Aug 2, 16, 30
Nieuw Amsterdam 2026 May 21; Jun 4, 18; Jul 2, 16, 30; Aug 13, 27; Sep 10	Nieuw Amsterdam 2026 May 17, 31; Jun 14, 28; Jul 12, 26; Aug 9, 23; Sep 6

D8 9-DAY CLASSIC DENALI DIRECT TO DENALI

FAIRBANKS TO VANCOUVER
(or reverse)

7-Day *Glacier Discovery* cruise plus:
1 night each: Denali + Fairbanks

INCLUDED IN YOUR CRUISETOUR
• McKinley Explorer** • *Denali Natural History*

LAND FIRST	CRUISE FIRST
Westerdam 2026 May 15, 29; Jun 12, 26; Jul 10, 24; Aug 7, 21; Sep 4	Westerdam 2026 May 10, 24; Jun 7, 21; Jul 5, 19; Aug 2, 16, 30
Nieuw Amsterdam 2026 May 22; Jun 5, 19; Jul 3, 17, 31; Aug 14, 28; Sep 11	Nieuw Amsterdam 2026 May 17, 31; Jun 14, 28; Jul 12, 26; Aug 9, 23; Sep 6

D9 10-DAY CLASSIC DENALI DIRECT TO DENALI

ANCHORAGE TO VANCOUVER
(or reverse)

7-Day *Glacier Discovery* cruise plus:
1 night each: Denali, Talkeetna + Anchorage

INCLUDED IN YOUR CRUISETOUR
• McKinley Explorer** • *Denali Natural History*

LAND FIRST	CRUISE FIRST
Westerdam 2026 May 14, 28; Jun 11, 25; Jul 9, 23; Aug 6, 20; Sep 3	Westerdam 2026 May 10, 24; Jun 7, 21; Jul 5, 19; Aug 2, 16, 30
Nieuw Amsterdam 2026 May 21; Jun 4, 18; Jul 2, 16, 30; Aug 13, 27; Sep 10	Nieuw Amsterdam 2026 May 17, 31; Jun 14, 28; Jul 12, 26; Aug 9, 23; Sep 6

DH 14-DAY ULTIMATE DENALI

FAIRBANKS TO VANCOUVER
(or reverse)

7-Day *Glacier Discovery* cruise plus:
2 nights each: Denali, Fairbanks + Homer
1 night: Anchorage

INCLUDED IN YOUR CRUISETOUR
• Tour Director • *Tundra Wilderness Tour (S)*†
• McKinley Explorer** • *Gold Dredge 8*
• *Riverboat Discovery (L)* • *Alaska Wildlife Conservation Center*

LAND FIRST	CRUISE FIRST
Westerdam 2026 May 10, 24; Jun 7, 21; Jul 5, 19; Aug 2, 16, 30	Westerdam 2026 May 10, 24; Jun 7, 21; Jul 5, 19; Aug 2, 16, 30
Nieuw Amsterdam 2026 May 17, 31; Jun 14, 28; Jul 12, 26; Aug 9, 23; Sep 6	Nieuw Amsterdam 2026 May 17, 31; Jun 14, 28; Jul 12, 26; Aug 9, 23; Sep 6



2026 CRUISETOUR ITINERARY OPTIONS Alaska, Denali & Yukon



Legend:

- Air Travel
- Land Transportation
- Rail Transportation
- Y1, Y2 & Y7 Ship Itineraries
- Y3-Y6 Ship Itineraries

INCLUDED TRANSPORTATION
Cruisetour flights require passport information and middle names, if applicable, to be submitted at the time of booking.

Icons: On Land, At Sea, Luxury Railcar, Luxury Motorcoach, Cruise, Plane

VISIT HOLLANDAMERICA.COM OR CONTACT YOUR TRAVEL ADVISOR OR PERSONAL CRUISE CONSULTANT TODAY.

ALASKA, DENALI & YUKON CRUISETOURS WITH GLACIER DISCOVERY CRUISE

Y1	DAY 0	1	2	3	4	5	6	7	8	9	10	11	12	13
land first	Vancouver	✈️ Dawson	✈️ Fairbanks	🚌 Triple Denali	✈️ Anchorage	✈️ Whittier	✈️ Hubbard Glacier	✈️ Glacier Bay	✈️ Skagway	✈️ Juneau	✈️ Ketchikan	✈️ Inside Passage	✈️ Disembark Vancouver	✈️ Vancouver
cont'd	14	15	16	17										
		✈️ Dawson	✈️ Vancouver	✈️ Cruisetour Ends										

Y2	DAY 0	1	2	3	4	5	6	7	8	9	10	11	12	13
land first	Vancouver	✈️ Dawson	✈️ Double Denali	✈️ Anchorage	✈️ Whittier	✈️ Hubbard Glacier	✈️ Glacier Bay	✈️ Skagway	✈️ Juneau	✈️ Ketchikan	✈️ Inside Passage	✈️ Disembark Vancouver	✈️ Vancouver	✈️ Cruisetour Ends
cruise first	Vancouver	✈️ Inside Passage	✈️ Ketchikan	✈️ Juneau	✈️ Skagway	✈️ Glacier Bay	✈️ College Fjord	✈️ Anchorage	✈️ Double Denali	✈️ Dawson	✈️ Vancouver	✈️ Cruisetour Ends		

Y2	DAY 0	1	2	3	4	5	6	7	8	9	10	11	12	13	14
land first	Vancouver	✈️ Dawson	✈️ Double Denali	✈️ Anchorage	✈️ Whittier	✈️ Hubbard Glacier	✈️ Glacier Bay	✈️ Skagway	✈️ Juneau	✈️ Ketchikan	✈️ Inside Passage	✈️ Disembark Vancouver	✈️ Vancouver	✈️ Cruisetour Ends	✈️ Vancouver
cruise first	Vancouver	✈️ Inside Passage	✈️ Ketchikan	✈️ Juneau	✈️ Skagway	✈️ Glacier Bay	✈️ College Fjord	✈️ Anchorage	✈️ Double Denali	✈️ Dawson	✈️ Vancouver	✈️ Cruisetour Ends			

Y7	DAY 0	1	2	3	4	5	6	7	8	9	10	11	12	13
land first	Fairbanks	✈️ Dawson	✈️ Triple Denali	✈️ Whittier	✈️ Hubbard Glacier	✈️ Glacier Bay	✈️ Skagway	✈️ Juneau	✈️ Ketchikan	✈️ Inside Passage	✈️ Disembark Vancouver	DIRECT TO DENALI		

ALASKA, DENALI & YUKON CRUISETOURS WITH ALASKA INSIDE PASSAGE CRUISE

Y3	DAY 0	1	2	3	4	5	6	7	8	9	10	11	12	13	14
land first	Anchorage	✈️ Triple Denali	✈️ Fairbanks	✈️ Dawson	✈️ Whitehorse	✈️ Skagway	✈️ Skagway	✈️ Glacier Bay	✈️ Ketchikan	✈️ Inside Passage	✈️ Disembark Vancouver				
cruise first	Vancouver	✈️ Inside Passage	✈️ Juneau	✈️ Skagway	✈️ Whitehorse	✈️ Dawson	✈️ Fairbanks	✈️ Triple Denali	✈️ Anchorage	✈️ Cruisetour Ends					

Y4	DAY 0	1	2	3	4	5	6	7	8	9	10	11	12
land first	Anchorage	✈️ Double Denali	✈️ Fairbanks	✈️ Dawson	✈️ Skagway	✈️ Skagway	✈️ Glacier Bay	✈️ Ketchikan	✈️ Inside Passage	✈️ Disembark Vancouver			
cruise first	Vancouver	✈️ Inside Passage	✈️ Juneau	✈️ Skagway	✈️ Dawson	✈️ Fairbanks	✈️ Double Denali	✈️ Anchorage	✈️ Cruisetour Ends				

Y5	DAY 0	1	2	3	4	5	6	7	8	9	10	11
land first	Anchorage	✈️ Double Denali	✈️ Fairbanks	✈️ Dawson	✈️ Whitehorse	✈️ Skagway	✈️ Glacier Bay	✈️ Ketchikan	✈️ Inside Passage	✈️ Disembark Vancouver		
cruise first	Vancouver	✈️ Inside Passage	✈️ Juneau	✈️ Whitehorse	✈️ Dawson	✈️ Fairbanks	✈️ Double Denali	✈️ Anchorage	✈️ Cruisetour Ends			

Y6	DAY 0	1	2	3	4	5	6	7	8	9	
cruise first	Vancouver	✈️ Inside Passage	✈️ Juneau	✈️ Dawson	✈️ Fairbanks	✈️ Double Denali	✈️ Anchorage	✈️ Cruisetour Ends			



2026 CRUISETOUR ITINERARY OPTIONS Alaska, Denali & Yukon

FLY INTO THE YUKON'S GOLDEN HEART

The seldom-seen wonders of the Yukon are just a one-hour flight from Fairbanks.

PASSPORT TO THE YUKON

Passport information is required at the time of booking any Alaska, Denali & Yukon cruisetour for entry into Canada.^{††}

KLONDIKE GOLD TOUR

Visit the National Historic Site that triggered the Klondike Gold Rush. Enjoy time at Gold Dredge 4 while a Parks Canada guide shares the history of gold dredging in the area.

Y1 17-DAY DENALI + YUKON

ROUNDRIP VANCOUVER

7-Day **Glacier Discovery** cruise plus:
3 nights: Denali
2 nights each: Dawson, Anchorage + Fairbanks
1 night: Vancouver

INCLUDED IN YOUR CRUISETOUR

- Tour Director
- **Gold Dredge 8**
- **Riverboat Discovery (L)**
- **Klondike Gold Tour**
- **Tundra Wilderness Tour (S)**^{*}
- Cruisetrain
- McKinley Explorer^{**†}

LAND FIRST

Nieuw Amsterdam
2026
May 14, 28; Jun 11, 25;
Jul 9, 23; Aug 6, 20; Sep 3

Westerdam
2026
May 21; Jun 4, 18;
Jul 2, 16, 30; Aug 13, 27

CRUISE FIRST

Westerdam
2026
May 10, 24; Jun 7, 21;
Jul 5, 19; Aug 2, 16

Nieuw Amsterdam
2026
May 17, 31; Jun 14, 28;
Jul 12, 26; Aug 9, 23

Y2 14-DAY DENALI + YUKON

ROUNDRIP VANCOUVER

7-Day **Glacier Discovery** cruise plus:
2 nights each: Dawson, Denali + Anchorage
1 night: Vancouver

INCLUDED IN YOUR CRUISETOUR

- Tour Director
- **Riverboat Discovery (L)**^{**}
- **Klondike Gold Tour**
- **Tundra Wilderness Tour (S)**^{*}
- McKinley Explorer^{**†}
- Cruisetrain

LAND FIRST

Nieuw Amsterdam
2026
May 17, 31; Jun 14, 28;
Jul 12, 26; Aug 9, 23; Sep 6

Westerdam
2026
May 24; Jun 7, 21;
Jul 5, 19; Aug 2, 16, 30

CRUISE FIRST

Westerdam
2026
May 10, 24; Jun 7, 21;
Jul 5, 19; Aug 2, 16

Nieuw Amsterdam
2026
May 17, 31; Jun 14, 28;
Jul 12, 26; Aug 9, 23

Y3 13- OR 14-DAY DENALI + YUKON

ANCHORAGE TO VANCOUVER (or reverse)

3- or 4-Day **Alaska Inside Passage** cruise plus:
3 nights: Denali
2 nights each: Dawson + Skagway
1 night each: Whitehorse, Anchorage + Fairbanks

INCLUDED IN YOUR CRUISETOUR

- Tour Director
- **Klondike Gold Tour**
- White Pass & Yukon Railway
- **Tundra Wilderness Tour (S)**^{*}
- McKinley Explorer^{**†}
- **Riverboat Discovery (L)**

LAND FIRST

Zaandam
2026
May 13, 20, 27;
Jun 3, 10, 17, 24;
Jul 1, 8, 15, 22, 29;
Aug 5, 12, 19

Koningsdam
2026
May 16, 23, 30; Jun 6, 13, 20, 27;
Jul 4, 11, 18, 25; Aug 1, 8, 15, 22

CRUISE FIRST

Koningsdam
2026
May 23, 30;
Jun 6, 13, 20, 27;
Jul 4, 11, 18, 25;
Aug 1, 8, 15, 22, 29



Emerald Lake, Yukon



2026 CRUISETOUR ITINERARY OPTIONS Alaska, Denali & Yukon

Y4 11- OR 12-DAY DENALI + YUKON

ANCHORAGE TO VANCOUVER
(or reverse)

3- or 4-Day *Alaska Inside Passage* cruise plus:
2 nights each: Dawson, Denali + Skagway
1 night each: Anchorage + Fairbanks

INCLUDED IN YOUR CRUISETOUR

- Tour Director
- *Tundra Wilderness Tour (S)**
- *Klondike Gold Tour*
- McKinley Explorer**†
- White Pass & Yukon Railway
- *Riverboat Discovery (L)*

LAND FIRST

Zaandam

2026

May 15, 22, 29; Jun 5, 12, 19, 26;
Jul 3, 10, 17, 24; 31
Aug 7, 14, 21

Koningsdam

2026

May 18, 25; Jun 1, 8, 15, 22, 29;
Jul 6, 13, 20, 27;
Aug 3, 10, 17, 24

CRUISE FIRST

Zaandam

2026

May 20, 27; Jun 3, 10, 17, 24;
Jul 1, 8, 15, 22, 29;
Aug 5, 12, 19, 26

Koningsdam

2026

May 23, 30; Jun 6, 13, 20, 27;
Jul 4, 11, 18, 25;
Aug 1, 8, 15, 22, 29

Y6 9-DAY DENALI + YUKON

VANCOUVER TO ANCHORAGE

3- or 4-Day *Alaska Inside Passage* cruise plus:
2 nights each: Dawson + Denali
1 night each: Anchorage + Fairbanks

INCLUDED IN YOUR CRUISETOUR

- Tour Director
- *Tundra Wilderness Tour (S)**
- McKinley Explorer**†
- White Pass & Yukon Railway
- *Klondike Gold Tour*

CRUISE FIRST

Zaandam

2026

May 20, 27; Jun 3, 10, 17, 24;
Jul 1, 8, 15, 22, 29;
Aug 5, 12, 19, 26

Y5 10- OR 11-DAY DENALI + YUKON

ANCHORAGE TO VANCOUVER
(or reverse)

3- or 4-Day *Alaska Inside Passage* cruise plus:
2 nights each: Dawson + Denali
1 night each: Whitehorse, Anchorage + Fairbanks

INCLUDED IN YOUR CRUISETOUR

- Tour Director
- *Tundra Wilderness Tour (S)**
- White Pass & Yukon Railway
- McKinley Explorer**†
- *Klondike Gold Tour*
- *Riverboat Discovery (L)*

LAND FIRST

Zaandam

2026

May 16, 23, 30 Jun 6, 13, 20, 27;
Jul 4, 11, 18, 25;
Aug 1, 8, 15, 22

Koningsdam

2026

May 19, 26; Jun 2, 9, 16, 23, 30;
Jul 7, 14, 21, 28;
Aug 4, 11, 18, 25

CRUISE FIRST

Zaandam

2026

May 20, 27; Jun 3, 10, 17, 24;
Jul 1, 8, 15, 22, 29;
Aug 5, 12, 19, 26

Koningsdam

2026

May 23, 30; Jun 6, 13, 20, 27;
Jul 4, 11, 18, 25;
Aug 1, 8, 15, 22, 29

Y7 13-DAY DENALI + YUKON

FAIRBANKS TO VANCOUVER

7-Day *Glacier Discovery* cruise plus:
3 nights: Denali
2 nights: Dawson
1 night: Fairbanks

INCLUDED IN YOUR CRUISETOUR

- Tour Director
- *Tundra Wilderness Tour (S)**
- McKinley Explorer**†
- *Riverboat Discovery (L)*
- *Klondike Gold Tour*

LAND FIRST

Nieuw Amsterdam

2026

May 18; Jun 1, 15, 29;
Jul 13, 27; Aug 10, 24; Sep 7

Westerdam

2026

May 25; Jun 8, 22;
Jul 6, 20; Aug 3, 17, 31



Miles Canyon, Yukon



2026 ALASKA Cruisetour Features



Local craft beer



Alaska Halibut

Find the perfect cruisetour itinerary for you.

CRUISETOUR FEATURES	D1	D2	D3	D4	D5	D6	D7	D8	D9	DO	DH	Y1	Y2	Y3	Y4	Y5	Y6	Y7	
GLACIER BAY NATIONAL PARK & PRESERVE Full day of scenic cruising and glacier watching	✓	✓	✓	✓	✓	✓	✓	✓	✓	✓	✓	✓	✓	LF♦	LF♦	LF♦			✓
MCKINLEY EXPLORER® Luxury domed railcars between Anchorage and Denali	✓	✓	✓	✓	✓	✓	✓	✓	✓	✓	✓	✓	✓	✓	✓	✓	✓	✓	✓
TUNDRA WILDERNESS TOUR (S)■ 5- to 6-hour wildlife-spotting adventure deep into Denali	✓	✓	✓	✓	✓	✓				✓	✓	✓	✓	✓	✓	✓	✓	✓	✓
DENALI NATURAL HISTORY TOUR 4½- to 5-hour tour of Denali's cultural and natural history							✓	✓	✓										
TOUR DIRECTOR Expert narration and travel coordination on land			✓	✓							✓	✓	✓	✓	✓	✓	✓	✓	✓
RIVERBOAT DISCOVERY (L) IN FAIRBANKS Cruise the Alaska interior on an authentic sternwheeler	✓		✓	✓	✓		P	P		✓	✓	✓	CF	✓	✓	✓			✓
GOLD DREDGE 8 IN FAIRBANKS Pan for gold at an actual mining camp	P		✓	✓	P		P	P		P	✓	✓							
WHITE PASS & YUKON ROUTE RAILWAY Spectacular mountain ride on a narrow-gauge train														✓	✓	✓	✓		
DIRECT TO DENALI Go between the ship and Denali; no overnight in Anchorage		R				M		R	R	R									R
DIRECT RAIL TO THE SHIP Follow Alaska's dramatic coastline by rail	✓	✓			✓		U	✓	✓	✓		✓	✓						✓
ALASKA WILDLIFE CONSERVATION CENTER See bears, moose, and other Alaska wildlife up close			✓	✓							✓								
HOLLAND AMERICA DENALI LODGE ROOM UPGRADES Deluxe Rooms or Denali Suites offer enhanced amenities	U	U	U	U	U	U	U	U	U	U	U	U	U	U	U	U	U	U	U
KLONDIKE GOLD TOUR Visit the historic site that triggered the Klondike Gold Rush												✓	✓	✓	✓	✓	✓	✓	✓

L = Lunch included; S = Snack included, full lunch upgrade available; U = Upgrade; P = Pre/post additional excursion; CF = Cruise First cruisetours only; LF = Land First cruisetours only; R = McKinley Explorer railway between the ship and Denali; M = Luxury motorcoach with included lunch between the ship and Denali. ♦ In lieu of Glacier Bay, Y3-Y6 Cruise First cruisetours offer an OPTIONAL excursion to Tracy Arm and the twin Sawyer Glaciers. ■ Visits to the park in May and September are dependent on conditions. If necessary, the *Tundra Wilderness Tour* may be replaced by the *Denali Natural History Tour*. **INCLUDED DINING:** All cruise dining is included. An additional snack is provided on the *Tundra Wilderness Tour*. Lunch is included before or after the *Riverboat Discovery* cruise as well as on the luxury motorcoach between Anchorage and Denali (D2), Whittier and Denali (D6), Anchorage and Homer (DH), Fairbanks and Denali (D3 Land First and D4 Land First), and Dawson City and Whitehorse (Y3, Y4, and Y5).



Denali Dining Upgrades

ELEVATE YOUR PLATE

GREAT LAND DINING PLANS

Upgrade to one of our Great Land Dining Plans and enjoy peace of mind as you journey from ship to shore, knowing that most of your meals — including taxes and gratuities — have been pre-planned and paid for. These flexible food plans apply only to the land portion of your Alaska cruisetour, must be purchased in advance, and include a range of delicious options at every stop.

We offer three Great Land Dining Plans to best fit your needs:

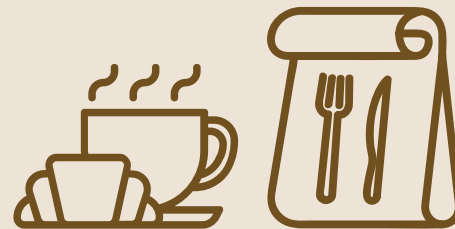


BREAKFAST DINING PLAN



Start your day off right with breakfast each morning, including coffee or tea plus gratuity

DENALI DINING PLAN



Includes most of your meals at the resort plus lunch on board the McKinley Explorer® railway

FULL DINING PLAN



Includes most breakfasts and dinners, plus lunch on your Denali park tour and the McKinley Explorer®

Enjoy the value, variety, and convenience of our delectable dining plans as you explore Alaska & the Yukon with Holland America.

Click to **LEARN MORE** about our **GREAT LAND DINING PLANS**





Denali Room Upgrades

ENHANCE YOUR STAY



Explore Denali room upgrade options

GUEST ROOMS AT HOLLAND AMERICA DENALI LODGE

Denali Suite: Park views from a private balcony, in-suite refrigerator, and more for \$99 per person, per night

Deluxe Stateroom: Easy access to Denali Square™ and upgraded amenities for \$49 per person, per night

Confirm availability and secure your room upgrade by contacting your travel advisor or calling us at 1-800-426-0327.



Private balcony



Deluxe Stateroom



Ridge View King Room

AMENITIES	DENALI SUITE	DELUXE STATEROOM	STANDARD STATEROOM
Private balcony with views of Denali National Park & Preserve	✓		
In-suite refrigerator	✓		
Premium bathrobes	✓	✓	
Pendleton® blankets	✓	✓	
Keurig® coffee machine	✓	✓	
S'mores kits to enjoy in Denali Square™	✓	✓	
Proximity to Denali National Park & Preserve	✓	✓	
Easy access to Denali Square™		✓	
Complimentary area shuttle	✓	✓	✓
Access to resort amenities	✓	✓	✓
UPGRADE PRICING	\$99 / night	\$49 / night	

WE ♥ ALASKA

Skagway, Alaska

Explore Alaska with our 360° sensory programming immersing you in all facets of Alaska. Our perfectly sized ships get you close-up views of glaciers, wildlife, and wilderness while you enjoy dining and entertainment that fosters a deeper connection to the people, history, and culture of the state.



Discover Alaska

ONBOARD ENRICHMENT

Experience Alaska with all your senses via our immersive onboard programming

ONBOARD EXPERTS

National Park Service Rangers and Alaska Native Voices Cultural Ambassadors detail each sight's historic and cultural significance

GLACIER DAYS

Every Alaska cruise includes at least one "Glacier Day," featuring special onboard programming, 360° glacier views, and more

ALASKA UP CLOSE PRESENTATIONS

Insightful entertainment from expert speakers on the World Stage

WILDLIFE SPOTTING

Find out the best times and places for spotting otters, bears, seals, and other land and sea animals from our onboard Wildlife Experts



National Park Service Ranger



Insights from onboard experts



Native Alaskan perspectives

Click to **LEARN MORE** about **ALASKA UP CLOSE**®



Taste Alaska

FRESH LOCAL FAVORITES

TASTE ALASKA

Simply seeing Alaska is not enough — you must get out and experience it for yourself

FRESH SUSTAINABLE SEAFOOD

As part of our Global Fresh Fish Program, our Alaska ships serve only 100% fresh, certified sustainable, and traceable wild Alaska seafood

CATCH & COOK

Reel in your own salmon or halibut in the waters of Juneau or Ketchikan and have it prepared on board through our **Savor My Catch** program

THEMED MENUS

Savor seafood boils, salmon bakes, Gold Rush dinners, and more!



SERVING AUTHENTIC GLACIAL ICE COCKTAILS

We've partnered with Alaska Glacial Ice to source already-calved glacial ice from 800-year-old Alaska glaciers to use in our signature cocktails.

- Juneauper Gin & Tonic
- Black & Blue
- Blue Iceberg
- Blue on Blue
- Alaska Blue Ice
- Whiskey Over America's Glacial Ice

Click to **LEARN MORE** about **ALASKA UP CLOSE® DINING**



Experience Alaska

SHORE EXCURSIONS

Simply seeing Alaska is not enough — you must get out and experience it for yourself

CONNECT WITH ALASKA

Learn more about the people, culture, and history of Alaska

KEEP WATCH FOR WILDLIFE

Choose from 175+ animal sanctuary and sightseeing opportunities

GET CLOSER TO GLACIERS

See the state's blue-hued giants by foot, bike, kayak, and more



Tracy Arm Fjord, Alaska



White Pass & Yukon Route Railway



Meet future sled dogs

Click to **LEARN MORE** about **ALASKA UP CLOSE® EXCURSIONS**



Dining

BARS & LOUNGES

Find everything from fresh seafood, specialty coffee, and craft cocktails to burgers, pasta, and fresh-made desserts. You can even treat yourself to breakfast in bed or a late-night snack with our complimentary 24-hour room service.

COMPLIMENTARY DINING OPTIONS

- | | |
|----------------------|-----------------|
| 24-hour room service | Lido Market |
| Dining Room | New York Pizzat |
| Dive-In | |

SPECIALTY RESTAURANTS*


- | | |
|-----------------|-------------------|
| Canaletto | Pinnacle Grill |
| Morimoto by Sea | Rudi's Sel de Mer |
| Nami Sushi | Tamarind |

COFFEE & TREATS*

- | | |
|------------------|------------------|
| Crow's Nest Café | Grand Dutch Café |
| Gelato | Library Café |

BARS & LOUNGES*

- | | | |
|-------------------|--------------|--------------|
| Crow's Nest | MIX | Pinnacle Bar |
| Explorer's Lounge | Ocean Bar | Sea View Bar |
| Lido Bar | Panorama Bar | Tamarind Bar |
| | | Taste |



Offerings vary by ship. Scan or click here to compare dining, activities, and other amenities across our fleet.

[CLICK HERE TO LEARN MORE](#)



*For a nominal fee. *New York Deli & Pizza on board *Koningsdam*.



Crow's Nest



Surf 'n' Turf



Triple Berry Alaska Tart



Song & Dance on the World Stage

Activities

DAY & NIGHT

Begin your day with a meditative Tai Chi session, a spin class in the Fitness Center, or an alfresco stroll around our teak Promenade Deck. Spend the afternoon making friends on the pickleball court or creating a masterpiece at one of our guided painting sessions. Once the sun sets, try your luck in the Casino, catch an interactive game show, or dance the night away at our award-winning music clubs.

MUSIC CLUBS



SPORTS & ACTIVITIES

- | | |
|-------------------------|-------------------------|
| Acrylic Paint on Canvas | Pickleball |
| Adult Coloring | Punch Needle Embroidery |
| Cornhole | Shuffleboard |
| Flower Arranging | Table Tennis |
| Modern Brush Lettering | Tai Chi |
| Origami | Watercolor Painting |



Sport Court



Billboard Onboard



Offerings vary by ship. Scan or click here to compare dining, activities, and other amenities across our fleet.

CLICK HERE TO **LEARN MORE**



THE ULTIMATE Spa Experience

Recharge in peaceful seclusion in our private Retreat or Lido cabanas, featuring dedicated butler service and more. Pamper yourself at sea in the award-winning Spa & Salon's relaxing Thermal Suite and soothing Hydropool.



Retreat cabana

SPA SERVICES

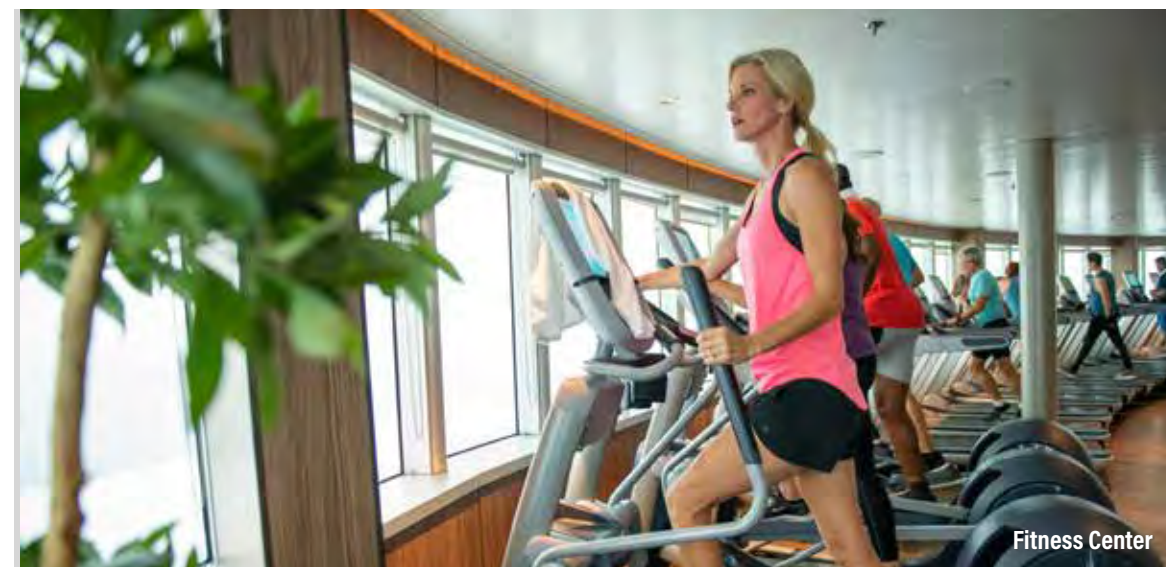
- Acupuncture Services
- Couples' Treatments
- Facial Treatments
- Hair & Nail Services
- Massage & Body Therapies
- Medi-Spa Treatments
- Teeth Whitening
- Thermal Suite & Hydropool

WELLNESS & FITNESS

- Body Composition Analysis
- Circuit Training
- Fitness Center
- Guided Meditation
- Nutritional Consultation
- Pain Management Workshop
- Personal Training
- Sport Court



Thermal Suite



Fitness Center



Offerings vary by ship. Scan or click here to compare dining, activities, and other amenities across our fleet.

[CLICK HERE TO LEARN MORE](#)



LIMITED-TIME OFFER

Early Booking *Bonus* Have it all.

Save up to 60% on top amenities with the Have It All Early Booking Bonus*! Enjoy all the benefits of our standard Have It All package, including Shore Excursion and Specialty Dining Credits, plus free prepaid Crew Appreciation, our Low Price Guarantee*, and free upgrades to the Elite Beverage Package and Premium Wi-Fi.



Glacier Bay National Park & Preserve

BOOK EARLY TO RECEIVE OUR BEST VALUE ON TOP AMENITIES



FREE PREPAID CREW APPRECIATION

Crew Appreciation, or stateroom gratuities, is covered for you (a value of us\$17 per day for Interior, Ocean View, and Verandah staterooms and us\$19 per day for suites) to recognize the efforts of a wide variety of crew members who contribute to the experiences of all our guests.



LOW PRICE GUARANTEE

If you find a lower, identical fare for your cruise before this offer expires, you are eligible to receive the difference in the form of an Onboard Credit, stateroom upgrade, or other benefit.



SHORE EXCURSIONS

The longer you cruise, the more you can explore!

- Cruise 6–9 days and receive us\$100 Shore Excursion Credit
- Cruise 10–20 days and receive us\$200 Shore Excursion Credit
- Cruise 21+ days and receive us\$300 Shore Excursion Credit



FREE UPGRADE PREMIUM WI-FI

Stay connected throughout your journey. Surf the web, use social media, check email, and send messages to family and friends.



FREE UPGRADE ELITE BEVERAGE PACKAGE

Choose from a large selection of wine, beer, spirits, and cocktails, plus non-alcoholic options such as sodas, coffees, and more — with service charges included.



SPECIALTY DINING

Enhance your cruise with award-winning specialty dining at Canaletto, Tamarind, or the famed Pinnacle Grill — with service charges included.

Click to see our **HAVE IT ALL EARLY BOOKING BONUS ITINERARIES**



Book Today - Limited-Time Offer

Early Booking *Bonus* Have it all.

Up to 3 Nights' Specialty Dining
Includes service charges; varies by voyage

Up to us\$300 Shore Excursion Credit
Varies by voyage length

FREE UPGRADE Elite Beverage Package
Includes service charges

FREE UPGRADE Premium Wi-Fi

FREE Prepaid Crew Appreciation
Gratuities

LOW PRICE GUARANTEE
U.S. & Canada only

See page 38 for Terms & Conditions.

TERMS & CONDITIONS

RESERVATIONS

Accommodations are limited. If you use a travel agent/travel agency ("TA") to book your reservation, you shall pay deposits and payments for Holland America Line's ("HAL") services to such TA. HAL will issue travel documents only if and when it has received full payment from TA. HAL will make any refunds to the applicable TA based only on the amount HAL actually received, less any applicable cancellation fees and charges; guest is responsible for obtaining any refund monies from TA.

DEPOSIT & FINAL PAYMENT REQUIREMENTS

Deposit is required at the time of cruise booking and final payment of balance must be received no later than 90 days prior to departure.

CANCELLATIONS

Our cancellation policy allows you to cancel your 2026 Alaska cruise up to 75 to 91 days prior to departure, depending on the cruise, and receive a full refund. If you cancel your 2026 Alaska cruise within 75 to 90 days prior to departure, depending on the cruise, you are required to pay a cancellation fee (including 3rd and 4th berths) as set forth below. Such fees are based on the fare paid, excluding Taxes, Fees & Port Expenses ("TFPE"), transfers, surcharges, shore and land excursions, and most pre-purchased gift(s) and/or special service(s). See more details in the Cruise Contract. For 2026 Alaska cruises, the cancellation fee amount varies based on the length of sailing and timing of cancellation as follows:

2026 ALASKA CRUISE TOURS — 9- TO 17-DAY ITINERARIES For USD, Australian, and Canadian pricing	
Number of Days Before Sailing Date on Which Guest Cancels Cruise	Amount of Cancellation Fee
90+ days' notice	0%
89-83 days' notice	Amount equal to deposit requirement
82-46 days' notice	50% of gross fare
45 days' or less notice	100% of gross fare

28-DAY ARCTIC CIRCLE SOLSTICE CRUISE	
Number of Days Before Sailing Date on Which Guest Cancels Cruise	Amount of Cancellation Fee
120+ days' notice	0%
119-91 days' notice	Amount equal to deposit requirement
90-76 days' notice	50% of gross fare
75 days' or less notice	100% of gross fare

Change to arrangements may be subject to change charges.

CREW APPRECIATION & SERVICE CHARGES

For your convenience, Crew Appreciation will automatically be added to your onboard account to recognize the efforts of a wide variety of crew members in various departments, including those in the Dining, Entertainment, Guest Services, and Galley areas. The amount of the Crew Appreciation is based on your stateroom category and is subject to adjustment at your discretion, except as otherwise provided in the Crew Appreciation and Service Charge Policy. A Service Charge will automatically be added to optional purchases of beverage packages, drinks, dining room and specialty dining, onboard parties, and other services or amenities provided to guests that are not included in the cruise fare. The Crew Appreciation and Service Charge payments on all vessels in our fleet are pooled and distributed in the form of compensation, including bonuses. For further details, please review our Crew Appreciation and Service Charge Policy.

TAXES, FEES & PORT EXPENSES

"Taxes, Fees & Port Expenses," or "TFPE" as used by HAL, may include any and all fees, charges, tolls,

and taxes imposed on HAL by governmental or quasi-governmental authorities, as well as third-party fees and charges arising from a vessel's presence in a harbor or port. TFPE may be assessed per guest, per berth, per ton, or per vessel. TFPE are subject to change, and HAL reserves the right to collect any increases in effect at the time of sailing even if the fare has already been paid in full.

GUESTS WITH DISABILITIES

Holland America Line seeks to accommodate the needs of guests with disabilities, to the extent feasible. Some accommodations require advanced notification. For more information, visit the Accessible Cruising section of our website.

MEDICAL SERVICES

Each of our ships is equipped with limited medical facilities that are staffed by a physician and registered nurses. Unless otherwise indicated in an active HAL policy (for example, the COVID-19 Protection Program), guest will be charged a fee for all medical services and medications obtained on board. If the onboard physician is unable to care for your needs on board, you will be transferred to medical facilities on shore. If your condition will require you to have a special medical apparatus or assistance on board, we must be made aware of that at the time of booking in order to determine whether we can accommodate your needs.

PASSPORTS / VISAS / IMMUNIZATIONS

You are solely responsible for securing and having available all proper documentation for the countries visited on your cruise or land tour and for bringing all necessary travel documents such as passports, visas, proof of citizenship, re-entry permits, minors' permissions, and medical certificates showing all necessary vaccinations. Guests should check with their TA or the appropriate governmental authority to determine the necessary documents. Guest will be refused boarding or disembarked without recourse or liability for refund, payment, compensation, or credit of any kind if they do not have proper documentation, and they will be subject to any fine or other costs incurred by HAL that result from improper documentation or non-compliance with applicable regulations.

RESPONSIBILITY

All HAL vessels are owned by HAL Antillen N.V. and operated by Holland America Line N.V. in its capacity as general partner of Cruiseport Curaçao C.V. Transportation on board the ship is provided solely by the Shipowner and Operator and pursuant to the Cruise Contract that you will receive prior to embarkation. Ships' Registry: The Netherlands.

Non-Holland America Line services (for example, shore excursions) are generally performed by independent contractors. These non-Holland America Line services are solely at your risk and subject to the terms or arrangements with the independent contractor. HAL assumes no responsibility with respect to these non-Holland America Line services (including cancellation, injury, or death) even though HAL may collect monies or make bookings.

ACCURACY OF CONTENTS / GENERAL

Contents of this brochure, including terms and conditions, are subject to change at any time at the sole discretion of HAL. Please refer to HollandAmerica.com for up-to-date information. **Any advertised offer may be changed or revoked at any time.**

Situations may arise which, in our opinion, make it necessary for us to cancel, advance, or postpone a scheduled departure, change itineraries, or make substitutions involving hotels, restaurants, ports of call, other travel components, vessels, or other modes of transportation. In that event, we do not assume responsibility or liability for any resulting losses, expenses, or inconvenience. We are not required to make refunds once travel commences, regardless of the reason for guests being unable to complete their travel.

The ship names and all other trademarks, slogans, logos, and imagery used herein are, whether or not registered, owned by Holland America Line N.V.

All guests will be required to agree to the Cruise Contract and all information and terms therein.


 CALL YOUR TRAVEL ADVISOR OR
1-877-SAIL HAL (1-877-724-5425)


 CALL YOUR TRAVEL ADVISOR
OR **1300 987 322**


 CALL YOUR TRAVEL ADVISOR
OR **0344 338 8605**

**OR VISIT
HOLLANDAMERICA.COM**

Holland America

 **HAVE IT ALL EARLY BOOKING BONUS TERMS & CONDITIONS** Have It All Early Booking Bonus Offer ("Early Booking Bonus Offer") fare and its parts are neither transferable nor refundable and have no cash value. Early Booking Bonus Offer fares available only on select departures and exclude Grand Voyages and any cruise lasting 5 days or less. Any advertised fare may be changed or revoked at any time. Fares are subject to full terms and conditions, available at HollandAmerica.com/package-terms. **Elite Beverage Package** has a daily limit of 15 beverages. Available only for beverages priced at US\$15 or less. Must be 21+ for alcoholic beverages. Management reserves the right to revoke the package and may refuse service for any reason. The package excludes beverages purchased in The Shops, from the mini-bar, through 24-hour room service or on Half Moon Cay. **Specialty Dining** based on cruise duration and ship type. Dining options are determined by ship and exclude all events in Pinnacle Grill. **Shore Excursion** offer is based on cruise duration and is per person, not per stateroom. For 6- to 9-day cruises, eligible guests will receive US\$100 credit per person to apply toward their shore excursion purchase(s). For 10- to 20-day cruises, eligible guests will receive US\$200 credit per person to apply toward their shore excursion purchase(s). For 21+ day cruises (excluding Grand Voyages), eligible guests will receive US\$300 credit per person to apply toward their shore excursion purchase(s). Shore Excursion credit must be used on corresponding cruise and is non-refundable. **Wi-Fi Premium Package:** All onboard Internet usage is subject to Holland America Line's ("HAL's") standard policies, which may limit or block browsing/use of some sites or applications due to network security and bandwidth usage. Offerings are subject to change without notice. Plan can be used on any device, but only one device can be actively connected at a time. Upgrades are available once on board. Offer applies to 1st/2nd guests in a stateroom only. **Low Price Guarantee:** If a guest books a HAL cruise with the Early Booking Bonus Offer (the "original booking") and such guest finds a cheaper price for an identical booking within the duration of the Early Booking Bonus Offer (the "Comparison Fare"), the difference may be compensated in the form of an onboard credit, stateroom upgrade or other method. HAL reserves the sole right to determine the method of compensation made to guests. A fare will be considered a Comparison Fare only if its booking consists of details that are identical to those of the original booking (including, but not limited to, the same ship, sail dates, stateroom category and number of guests as the original booking). A determination as to whether the located fare is identical to the original booking will be at HAL's sole discretion. HAL reserves the right to apply this price protection and offer at its discretion. Other restrictions and exclusions may apply. Holland America Line is neither responsible nor liable for any printing errors. Promotion is based on promotion code(s) N2 and based on double occupancy. Ships' Registry: The Netherlands.

 **HAVE IT ALL EARLY BOOKING BONUS TERMS & CONDITIONS** Have It All Early Booking Bonus Offer ("Early Booking Bonus Offer") is available for a limited time, on a first-come, first-served basis, to the first guests that make a new booking in connection with the Early Booking Bonus Offer while it is available. Taxes, Fees & Port Expenses are included. All values herein are in USD. Holland America Cruise Line ("HAL") may change or revoke the Offer or its parts at any time. Early Booking Bonus Offer is valued at US\$130 per day. Other exclusions and terms may apply; void where prohibited. Early Booking Bonus Offer and its parts are neither transferable, substitutable, nor redeemable for cash. Early Booking Bonus Offer is available for 1st/2nd guests only. Early Booking Bonus Offer fares available only on select departures and exclude Grand Voyages and any cruise lasting 5 days or less. **Elite Beverage Package** has a daily limit of 15 beverages, including all beverages priced at US\$15 or less and includes beverage service charges. The Elite Beverage Package includes wine, beer, spirits, cocktails, non-alcoholic beverages, sodas, bottled water (sparkling or still, 400ml or less) and coffee. Guests must order one beverage at a time and be 21 years+ for alcoholic beverages. Sharing of any beverage or the package is not permitted. Beverage management/HAL reserve the right to revoke the package if misused and refuse service for any reason, including service of alcoholic beverages to intoxicated guests. Package excludes beverages purchased in The Shops, from the mini-bar, through 24-hour room service or on Half Moon Cay. **Specialty Dining** is based on cruise duration and ship type. For 6- to 9-day cruises, guests will receive one night at Pinnacle Grill, Canaletto or Tamarind. For ships without Tamarind, guests will receive one night at Pinnacle Grill or Canaletto. For 10- to 20-day cruises, guests will receive two nights: one night at Pinnacle Grill and one night at Canaletto or Tamarind. For ships without Tamarind, guests will receive two nights: one night at Pinnacle Grill and one night at Canaletto. For 21+ day cruises (excluding Grand Voyages), guests will receive three nights: one night at Pinnacle Grill, one night at Tamarind and one night at Canaletto. For ships without Tamarind, guests will receive three nights: two nights at Pinnacle Grill and one night at Canaletto. Offer excludes Speciality Dining Events in Pinnacle Grill such as Sel de Mer, A Taste of De Librije and Cellar Master Dinner. Reservations and dining times will be available to pre-reserve. **Shore Excursion credit** is based on cruise duration and is per person, not per stateroom. For 6- to 9-day cruises, eligible guests will receive US\$100 credit per person to apply toward their shore excursion purchase(s). For 10- to 20-day cruises, eligible guests will receive US\$200 credit per person to apply toward their shore excursion purchase(s). For 21+ day cruises (excluding Grand Voyages), eligible guests will receive US\$300 credit per person to apply toward their shore excursion purchase(s). Shore Excursion credit must be used on corresponding cruise and is non-refundable. Shore Excursion credit cannot be redeemed for cash value or applied to a non-shore excursion item. **Wi-Fi Premium Package:** All onboard Internet usage is subject to HAL standard policies, which may limit browsing of some sites due to network security and bandwidth usage. Applications that use high bandwidth may be blocked and offerings are subject to change with or without notice. The plan can be activated on any device, but only one device can be actively connected at a time. Upgrades are available once on board for a single day, the remaining duration of the voyage or adding more devices. Offer applies to 1st/2nd guests in a stateroom only. **Crew Appreciation:** Receive prepaid stateroom gratuities on board. Gratuities for other services, including, but not limited to, bar, dining room, wine accounts and spa/salon services, are not included. HAL is not responsible or liable for any printing errors. Promotion is based on promotion code(s) N2 and based on double occupancy. Ships' Registry: The Netherlands.

 **HAVE IT ALL EARLY BOOKING BONUS TERMS & CONDITIONS** Have It All Early Booking Bonus Offer ("Early Booking Bonus Offer") is available for a limited time, on a first-come, first-served basis, to the first guests that make a new booking in connection with the Early Booking Bonus Offer while it is available. Taxes, Fees & Port Expenses are included. All values herein are in USD. Holland America Cruise Line ("HAL") may change or revoke the Offer or its parts at any time. Early Booking Bonus Offer is valued at US\$130 per day. Other exclusions and terms may apply; void where prohibited. Early Booking Bonus Offer and its parts are neither transferable, substitutable, nor redeemable for cash. Early Booking Bonus Offer is available for 1st/2nd guests only. Early Booking Bonus Offer fares available only on select 2024 and 2025 departures. **Elite Beverage Package** has a daily limit of 15 beverages, including all beverages priced at US\$15 or less, and includes beverage service charges. The Elite Beverage Package includes wine, beer, spirits, cocktails, non-alcoholic beverages, sodas, bottled water (sparkling or still, 400ml or less) and coffee. Guests must order one beverage at a time and be 21 years+ for alcoholic beverages. Sharing of any beverage or the package is not permitted. Beverage management/HAL reserve the right to revoke the package if misused and refuse service for any reason, including service of alcoholic beverages to intoxicated guests. Package excludes beverages purchased in The Shops, from the mini-bar, through 24-hour room service or on Half Moon Cay. **Specialty Dining** is based on cruise duration and ship type. For 6- to 9-day cruises, guests will receive one night at Pinnacle Grill, Canaletto or Tamarind. For ships without Tamarind, guests will receive one night at Pinnacle Grill or Canaletto. For 10- to 20-day cruises, guests will receive two nights: one night at Pinnacle Grill and one night at Canaletto or Tamarind. For ships without Tamarind, guests will receive two nights: one night at Pinnacle Grill and one night at Canaletto. For 21+ day cruises (excluding Grand Voyages), guests will receive three nights: one night at Pinnacle Grill, one night at Tamarind and one night at Canaletto. For ships without Tamarind, guests will receive three nights: two nights at Pinnacle Grill and one night at Canaletto. Offer excludes Speciality Dining Events in Pinnacle Grill such as Sel de Mer, A Taste of De Librije and Cellar Master Dinner. Reservations and dining times will be available to pre-reserve. **Shore Excursion credit** is based on cruise duration and is per person, not per stateroom. For 6- to 9-day cruises, eligible guests will receive US\$100 credit per person to apply toward their shore excursion purchase(s). For 10- to 20-day cruises, eligible guests will receive US\$200 credit per person to apply toward their shore excursion purchase(s). For 21+ day cruises (excluding Grand Voyages), eligible guests will receive US\$300 credit per person to apply toward their shore excursion purchase(s). Shore Excursion credit must be used on corresponding cruise and is non-refundable. Shore Excursion credit cannot be redeemed for cash value or applied to a non-shore excursion item. **Wi-Fi Premium Package:** All onboard Internet usage is subject to HAL standard policies, which may limit browsing of some sites due to network security and bandwidth usage. Applications that use high bandwidth may be blocked and offerings are subject to change with or without notice. The plan can be activated on any device, but only one device can be actively connected at a time. Upgrades are available once on board for a single day, the remaining duration of the voyage or adding more devices. Offer applies to 1st/2nd guests in a stateroom only. **Crew Appreciation:** Receive prepaid stateroom gratuities on board. Gratuities for other services, including, but not limited to, bar, dining room, wine accounts and spa/salon services, are not included. HAL is not responsible or liable for any printing errors. Promotion is based on promotion code(s) N2 and based on double occupancy. To be read in conjunction with the Holland America Line Cruise Contract at HollandAmerica.com/en_US/legal-privacy-australia/cruise-contract.html, by which guests will be bound. Whilst all information is correct at time of publication, offers are subject to change or withdrawal. Carnival plc trading as Carnival Australia ABN 23 107 998 443 as agent for Holland America Line. Ships' Registry: The Netherlands.



HOLLAND AMERICA LINE
NAVIGATOR
DOWNLOAD THE
NAVIGATOR® APP

The **Holland America Line Navigator® App** is your indispensable tool for cruise planning, essential updates, embarkation, managing your onboard experience, and booking shore excursions.